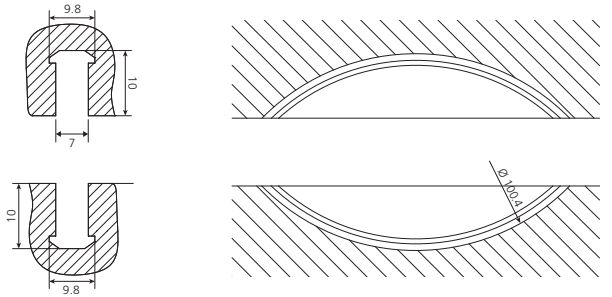
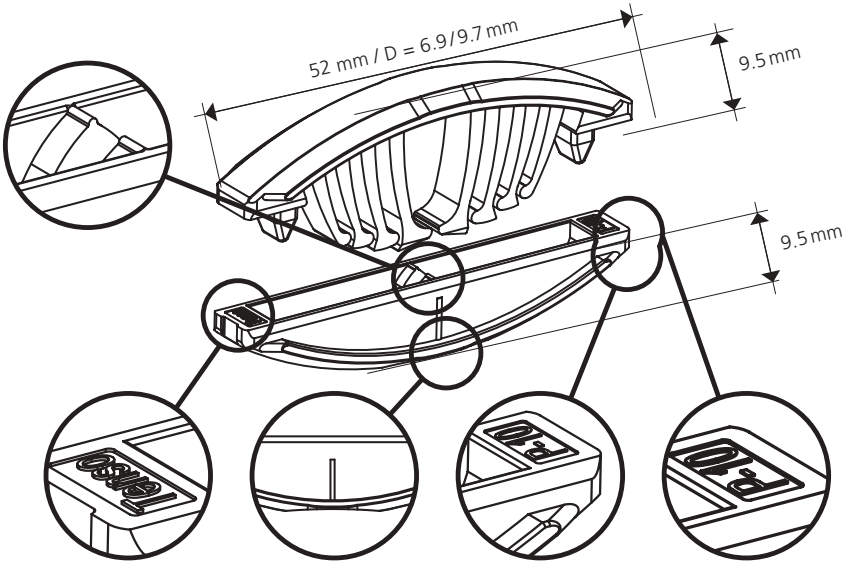




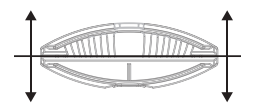
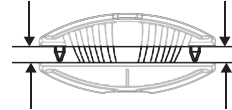
Tenso P-10

Pat. pend.



Anzugskraft / Tensile Force: 100 N

Haltekraft / Retention Force: 180 N



Hinweis: Die Zug- bzw. Scherfestigkeit ist abhängig vom Klebstoff / Tip: The tensile or shear strength depends on the used adhesiv

Immer in Verbindung mit Klebstoff verwenden

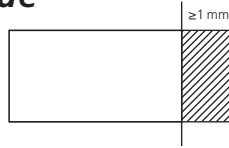
Hinweis:

- Trockener Zusammenbau mit **Bisco P-10** möglich
- Bei Arbeiten mit 12 mm bzw. 13 mm dicken Materialien muss mindestens eine 1 mm Kante verwendet werden

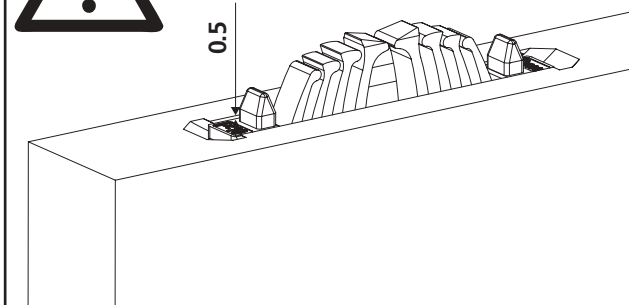
Always use in combination with glue

Tip:

- Test assembly with **Bisco P-10** possible
- When working with 12 mm or 13 mm thick materials at least one 1mm edge must be used



Wichtig: Für eine maximale Spannkraft!
Important: For maximum clamping force!

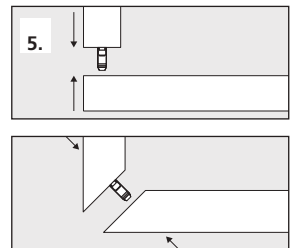
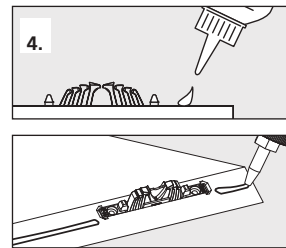
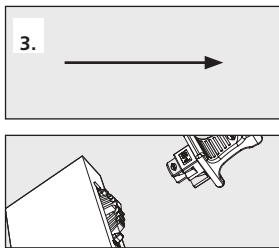
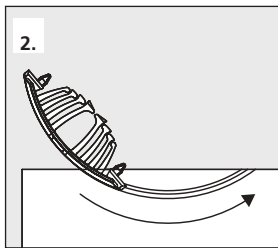
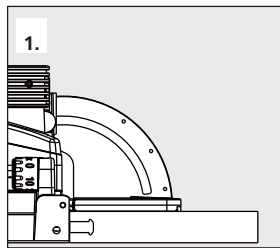
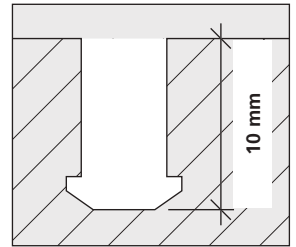
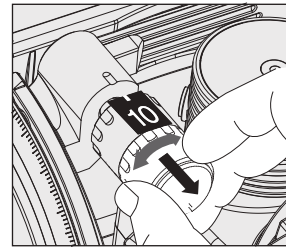


Zeta P2

Art.Nr. 101402

Art.Nr. 132140 (Diamant)
DP, Ø 100.4 x 7 x 22 mm

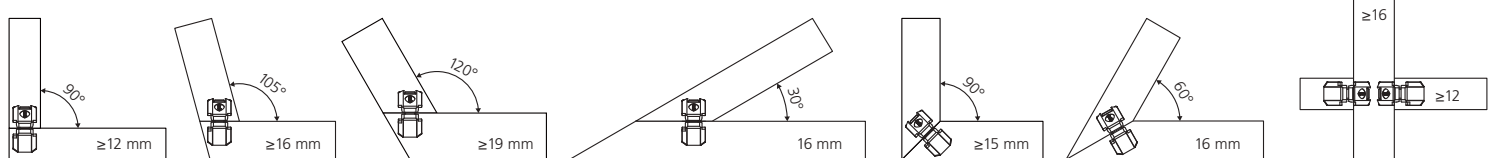
Art.Nr. 132141
HW, Ø 100.9 x 7 x 22 mm



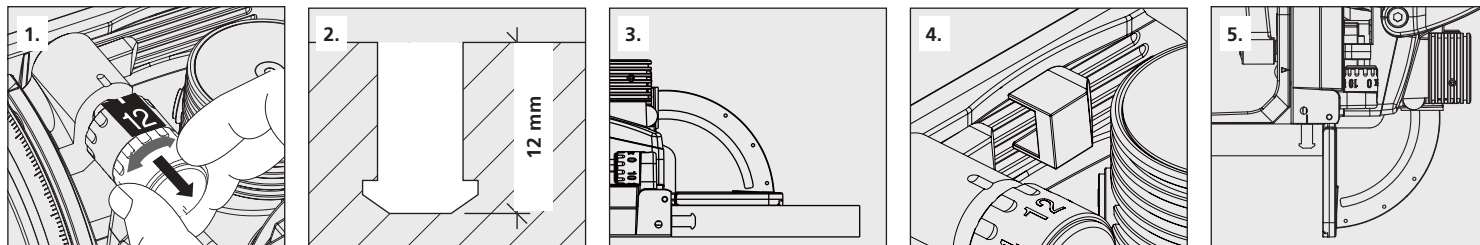
Scharfe Fräser verwenden
Use sharp cutters

max. 30 min

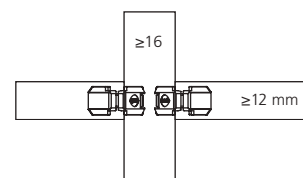
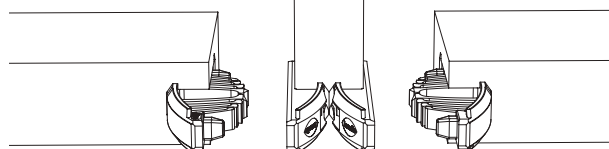
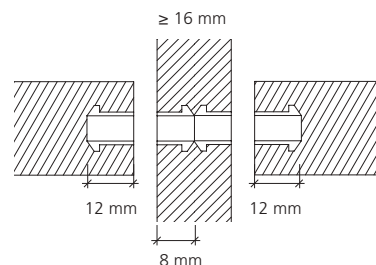
Anwendungen / Applications



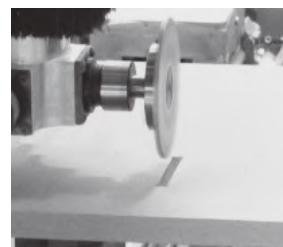
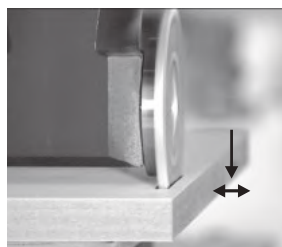
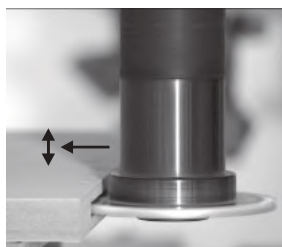
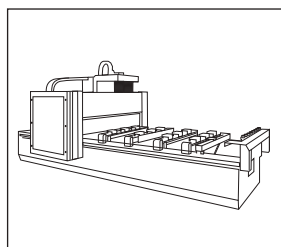
Versetzter Einbau / Offset installation



P-12 P-8 P-12



CNC | Partner network: www.lamello.ch



Art.Nr. 132142

DP, 100.4 x 7 x 30 mm
4 / 6.6 / DTK 48 mm

* Passend zu allen aufgeführten Fräsdornen /
Suitable for all cutter arbors listed

Art.Nr. 132143

DP, 100.4 x 7 x 40 mm
4 / 5.5 / DTK 52 mm

Art.Nr. 132144

DP, 100.4 x 7 x 16 mm
4 / 5.5 / DTK 28 mm



* Art.Nr. 132150

20 x 50, L = 102 mm

* Art.Nr. 132151

25 x 60, L = 102 mm

* Art.Nr. 132152

16 x 50, L = 85 mm

* Art.Nr. 132153

16 x 55, L = 68 mm

* Art.Nr. 132154

16 x 50, L = 85 mm, mit Spannfläche (2°-schräg) / with clamping surface (2°-angle)

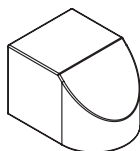
* Art.Nr. 132155

20 x 50, L = 85 mm, mit Spannfläche (2°-schräg) / with clamping surface (2°-angle)



Art.Nr. 145439

Tiefenstelleraufsatz /
Depth adjuster cap

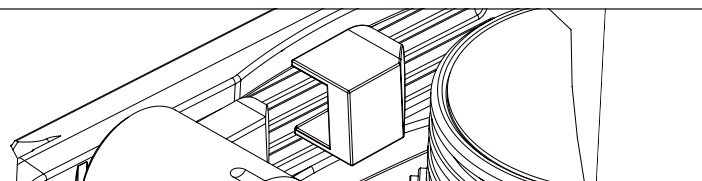


Stück/Piece/
Pièce/Pezzi

Art.Nr.

1

145439



Divario P-18

Tenso P-14

Tenso P-10

Clamex P Medius 14/10

Clamex P-14

Clamex P-10

Bisco P-14 Bisco P-10



Paar/Pair/
Paire/Paio

Art.Nr.

80 145550

300 145560

1000 145570

Paar/Pair/
Paire/Paio

Art.Nr.

80 145415

300 145425

1000 145435

Paar/Pair/
Paire/Paio

Art.Nr.

80 145418

300 145428

1000 145438

Paar/Pair/
Paire/Paio

Art.Nr.

80 145370

300 145371

1000 145357

Paar/Pair/
Paire/Paio

Art.Nr.

80 145334

300 145346

1000 145356

Paar/Pair/
Paire/Paio

Art.Nr.

80 145372

300 145373

1000 145374

Stück/Piece/
Pièce/Pezzi

Art.Nr.

P-10 80 145304

300 145305

P-14 80 145301

300 145302

1000 145303