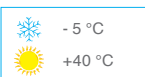
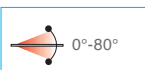


107E40

Biloba Unica
SLIM WOOD
oildynamic hinge



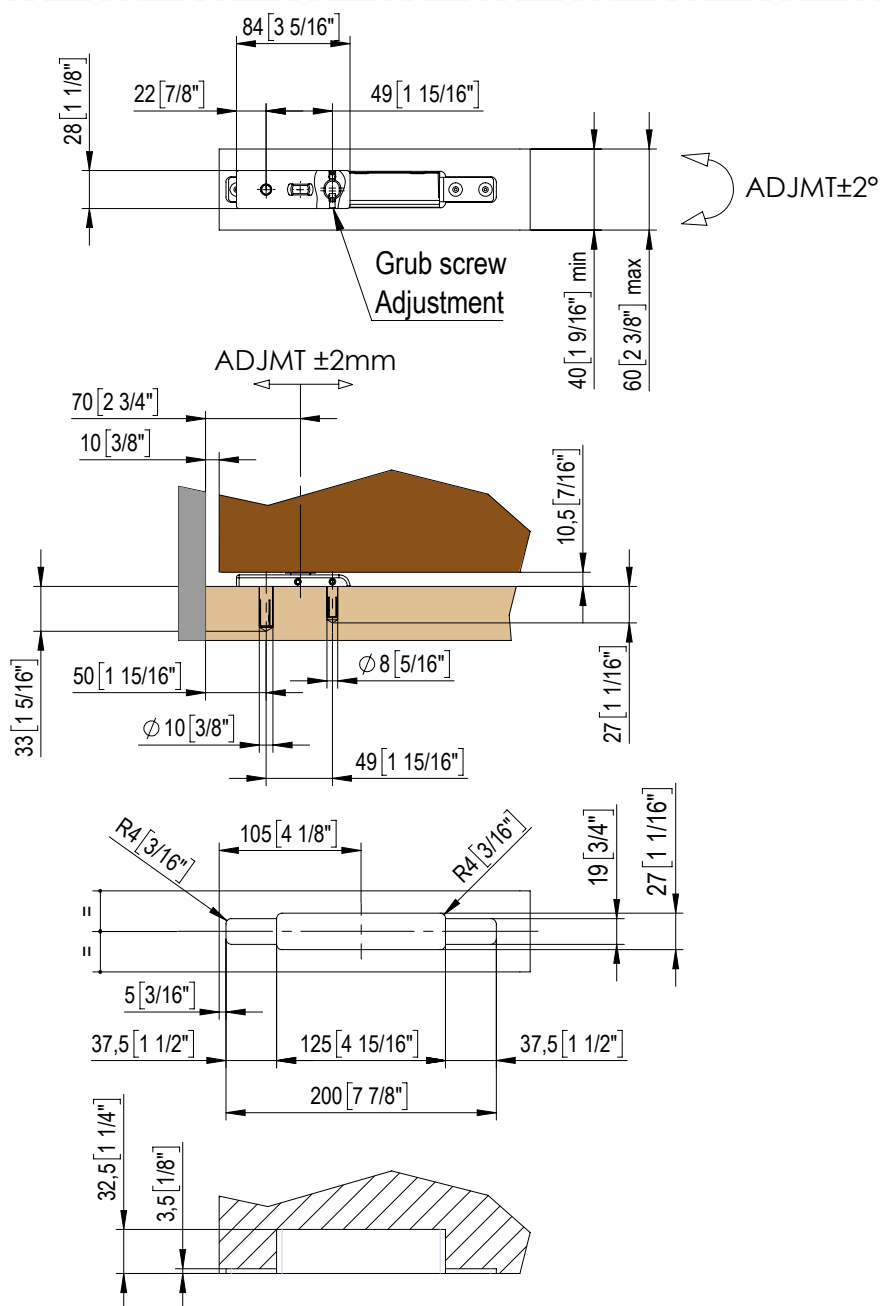
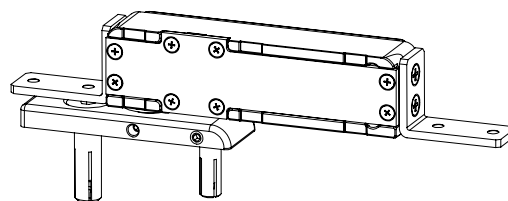
• Cerniera oleodinamica con chiusura automatica a velocità preimpostata, non modificabile. Stop a 0° +90° -90°. Abbinandola con cerniera superiore dedicata, è possibile ridurre la velocità di chiusura di pochi secondi.

• Bisagra hidráulica con cierre automático con velocidad de cierre predeterminada, no modificable. Cerrojo a 0° +90° -90°. También apta para puertas con tope. Combinando la bisagra con la bisagra superior dedicada, es posible reducir la velocidad de cierre de unos segundos.

• Hydraulic hinge with predetermined, non-modifiable automatic closing. Stop at 0° +90° -90°. Suitable for doors with a stop as well. Combining the lower hinge with the upper one allows the reduction of closing speed of some seconds.

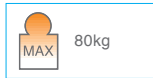
• Hydraulikscharnier mit Feststellung der Türschließgeschwindigkeit und voreingestellte Geschwindigkeit. Stop at 0° +90° -90°. In Kombination mit dem oberen Band 106E20/27, es ist möglich, die Türschließgeschwindigkeit, um einige Sekunden zu reduzieren.

• Charnière hydraulique avec système de fermeture intégré et vitesse pré réglée, non modifiable. Arrêt à 0°, +90° et -90°. Avec la charnière supérieure 106e20/27, il est possible de réduire la vitesse de fermeture en quelques secondes.

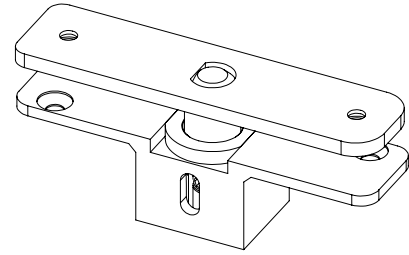


107E42/47

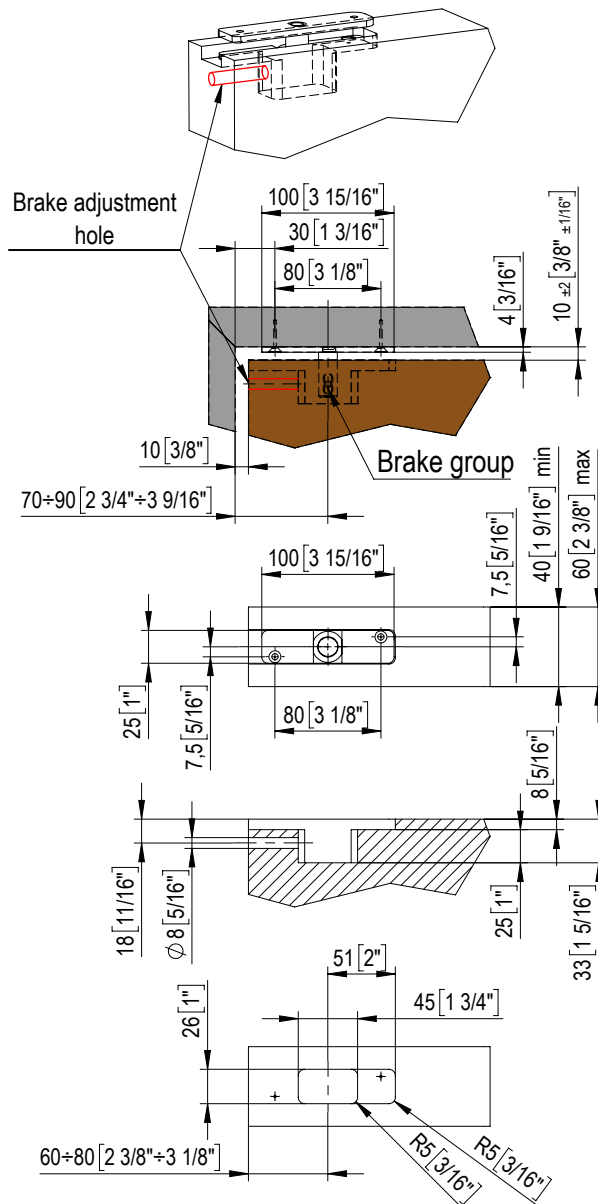
Biloba Unica SLIM WOOD



- Cerniera superiore con piletta e dispositivo frenante integrato. Da abbinare con cerniera inferiore art.107E40.
- Bisagra superior con punto de giro y dispositivo de freno integrado. Utilizar en combinación con la bisagra inferior, art.107E40.
- Upper hinge with pivot and integrated braking system. To be used in combination with lower hinge art. 107E40.
- Oberes Band mit Zapfen und integriertem Bremsmechanismus. In Kombination mit dem unterem Band art. 107E40.
- Charnière supérieure avec axe et système de fermeture intégré. A utiliser en association avec la charnière inférieure art.107E40.



LATERAL HOLE VERSION



FRONT HOLE VERSION

